



GAT MONTHLY MEMBERSHIP PROGRESS REPORT

Results as of: 6/30/2024

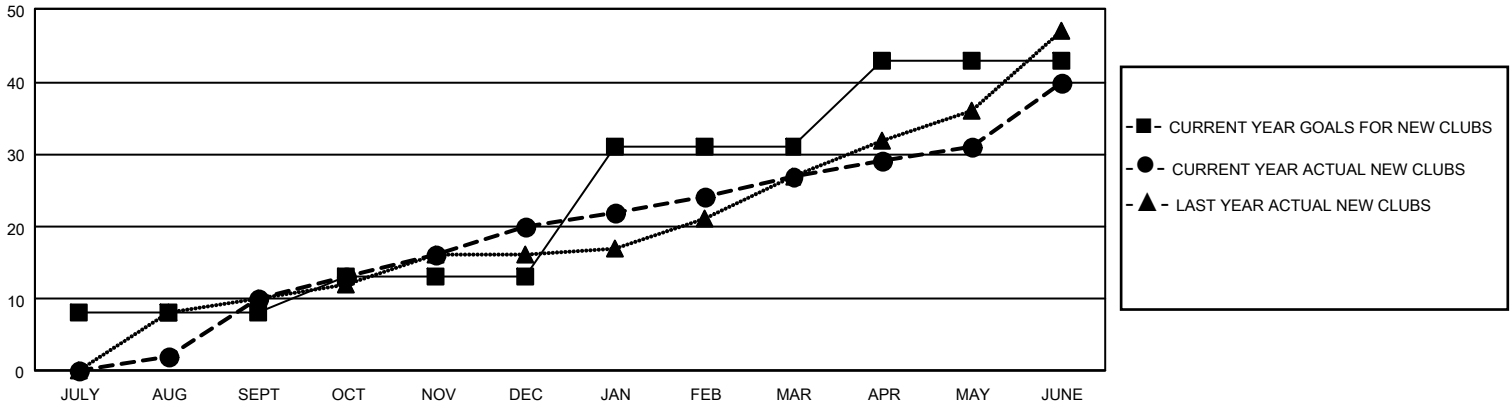
GMT Constitutional Area 3, Group B

REPORT DOES NOT INCLUDE CLUBS IN UNDISTRICTED AREAS.

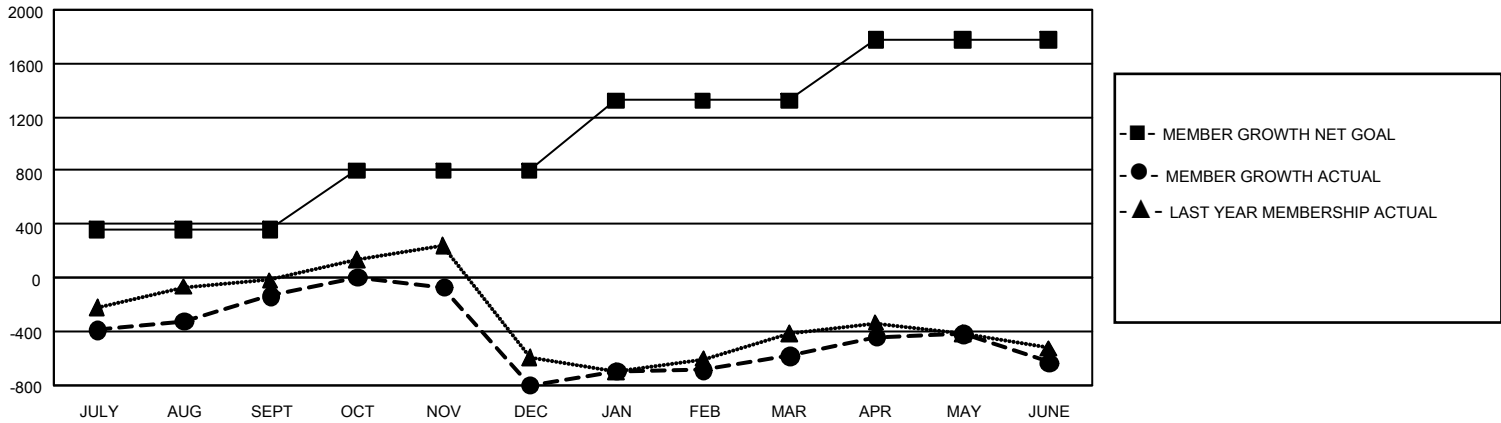
Clubs			
RESULTS FOR 2023-2024			
QUARTER	NEW CLUB GOAL	NEW CLUBS	DROPPED CLUBS
JULY/AUG/SEPT	24	10	6
OCT/NOV/DEC	15	10	19
JAN/FEB/MAR	54	7	3
APR/MAY/JUNE	36	13	19

Members			
RESULTS FOR 2023-2024			
QUARTER	MEMBER GROWTH NET GOAL	MEMBER GROWTH ACTUAL	DROPPED MEMBERS ACTUAL (including transfers)
JULY/AUG/SEPT	360	842	923
OCT/NOV/DEC	441	849	1,454
JAN/FEB/MAR	521	705	380
APR/MAY/JUNE	456	1,184	1,109

GOALS AND ACTUAL NEW CLUBS CUMULATIVE



GOALS AND ACTUAL MEMBERS CUMULATIVE



DROPPED CLUBS: 47	523 CLUBS OF 968 ADDED 1 OR MORE NEW MEMBERS	<u>GENDER DISTRIBUTION</u>	
		MALE 10,612 (41.65%)	FEMALE 14,863 (58.34%)
<u>DROPPED MEMBERS</u>		NON BINARY 0 (0.00%)	PREFER NOT TO ANSWER 3 (0.01%)
DECEASED 148	CLICK HERE FOR CUMULATIVE MEMBERSHIP DATA	TOTAL FAMILY UNIT MEMBERS 6,101	
CLUB CANCELLED 650		FAMILY MEMBERS PAYING HALF DUES 3,578	
OTHER 3,060			
TOTAL 3,858			